

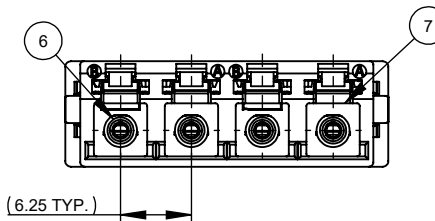
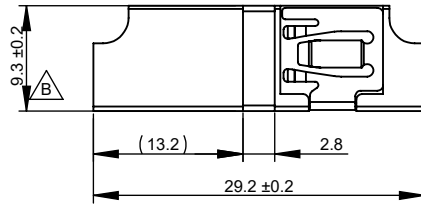
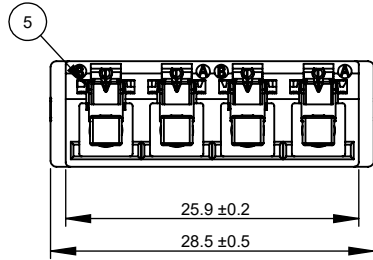
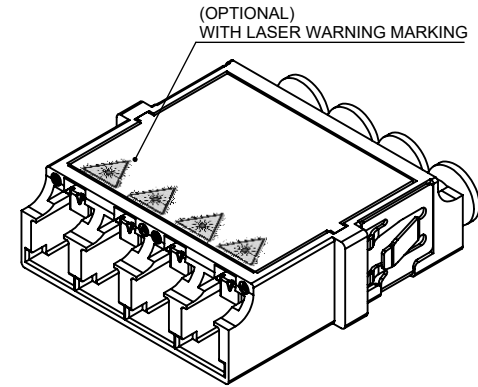
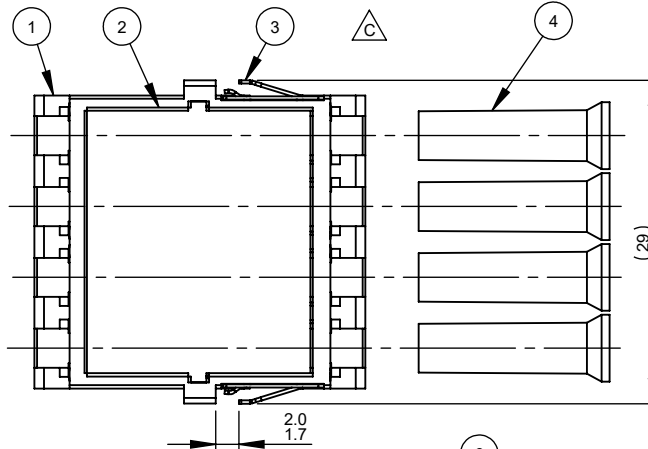
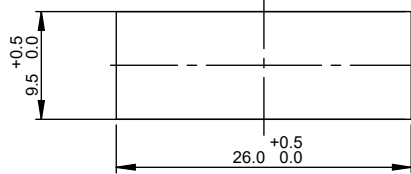
- NOTES:  
 1. ALL MATERIALS ARE COMPLIANT TO RoHS, REACH SVHC AND UL 94 V-0  
 2. INTERFACE DIMENSIONS COMPLIANT TO IEC 61754-20 (TYPE LC CONNECTOR FAMILY)

REVISIONS				
ZONE	REV.	DESCRIPTION	DATE	APPROVED
	A	DRAWING RELEASE (6/5/2018 REISSUED: PN TABLE UPDATED)	5/31/2018	S. LEUNG
2A, 3D	B	TOLERANCE UPDATED (10/29/2019 PCN170915001: SLEEVE MATERIAL OPTION UPDATED)	10/4/2018	N. HO KEITH CHUNG
4B, 8E	C	RATTLE FREE MOUNT PLATE CHANGED	10/30/2020	KEITH CHUNG

PART NUMBER SCHEME TABLE

TYPE	COLOR	SLEEVE MATERIAL	LASER WARNING MARK
985-6S	QUAD WITHOUT FLANGE	1	ZR
1	BLUE	-	A
2	BLACK	-	C
3	GREEN		
5	LIME GREEN (OM5)		
7	HEATHER VIOLET		
8	BEIGE		
9	AQUA		

MOUNTING HOLE DIMENSIONS  
 PANEL THICKNESS 1.7mm MAX.  
 (REFERENCE ONLY)



**CONFIDENTIAL**

Category

**C**

Information on this document is proprietary and may not be used, copied, reproduced, or disclosed without the written consent of SENKO Advanced Components, Inc.

UNLESS OTHERWISE SPECIFIED: DEBURRS ALL SHARP EDGES. DIMENSIONS ARE AFTER FINISH.

All Dimensions are in mm

TOLERANCES: X. = ±  
 X = ±0.1  
 .XX = ±0.05  
 .XXX = ±  
 ∠ = ±3°

ITEM NO.	DESCRIPTION	QTY.
1	LC INNER SHUTTER QUAD ADAPTER HOUSING, NO FLANGE	1
2	LC INNER SHUTTER QUAD ADAPTER COVER, PBT	1
3	SC DUPLEX FOOTPRINT (LC QUAD) ADAPTER RATTLE FREE METAL MOUNT PLATE, SUS $\triangle C$	1
4	LC ADAPTER DUST CAP, TPE	4
5	INTERNAL SHUTTER, SUS	4
6	LC ALIGNMENT SLEEVE (SEE TABLE)	4
7	LC INNER SHUTTER ADAPTER DUPLEX ALIGNMENT SLEEVE HOLDER, PEI	4

Drawn By: ENG. DEPT.

Checked By: S. LEUNG

Material: SEE BOM

Scale: Free

**SENKO**  
 Advanced Components

Part Number: 985-6SXX-X

Description: LC INNER SHUTTER QUAD ADAPTER, NO FLANGE  
 RATTLE-FREE MOUNT CLIP

DWG# C-ENH18-298

Rev. C

Sheet 1