

# FastCheck Fully Automatic Fiber Endface Inspector



FastCheck is an intelligent face detector dimension new technology research and development, mainly for the components and modules for face detection; automatic centering, automatic focusing, automatic exposure function is introduced, which can automatically detect the FastGet assembly module.

FastCheck is also equipped with an extension of the IO interface, to be able to cooperate with the use of a variety of our company; and even to build a dedicated end face detection, cleaning system.

## Main Features

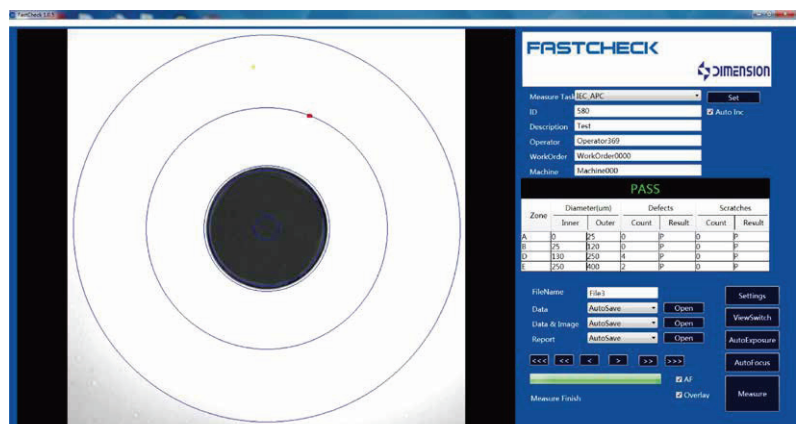
- Small Volume
- Automatic Exposure
- Automatic Focusing
- Workable with Offsoon Mark III cleaner
- Indicator light shows working condition

## Applications

- Single-fiber connector and module inspection

## Automatic Analysis

With function of auto center, focus and exposure, Fastcheck can inspect the endface on adaptors and modules automatically.



### Perfect Io Interface

Fastcheck has a separate IO interface, which can realize remote triggering measurement and transmit the results, also can make the cooperation with other devices.

### Excellent Extended Function

Equipped with side bracket, Fastcheck can link with the handle of Offsoon Mark III cleaner and fiber optic endface inspector to integrate and work together.




### Automatic Reporting

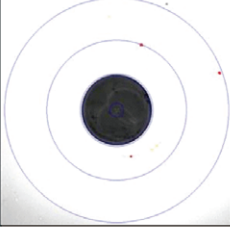
Fastcheck can generate data and reports in Excel format for each measurement automatically, which can make each inspection easy to record and traceable to make the quality control, management and analysis.

Measure Report							
DIMENSION		FastCheck Inspector		Dimension Technology Co., Ltd			
<b>PASS</b>							
Productor IC				580			
Description				Test			
Measure Task				IEC APC			
Produced by				Dimension000			
Test Time				29/08/2016 09:45:48			
Operator				Operator369			
WorkOrder				WorkOrder0000			
Machine				Machine000			
Zone	Defects		Scratches		Count	P/F	P/F
	Inner	Outer	Count	P/F			
1	0	25			0 P		0 P
2	25	120			0 P		0 P
3	130	250			4 P		0 P
4	250	400			2 P		0 P
5							
6							

Original



Analyse



### Specifications

Item	Parameters
Magnification	10X
Power supply	24V
Focus	Auto
Operation Temperature	-10°C ~ +55°C
Storage Temperature	-20°C ~ +60°C
Weight	3.3kg
Size (H*W*D)	286mmX101mmX86mm