



LINEBACKER® CABLE PROTECTORS

GP

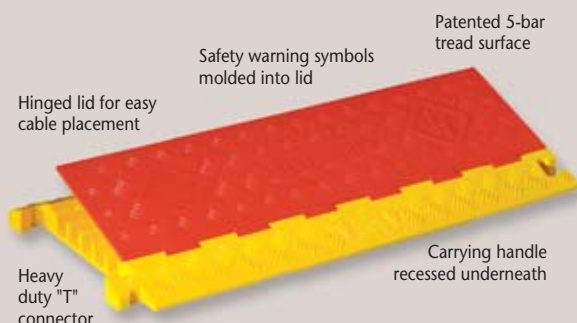
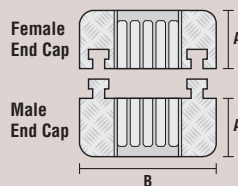
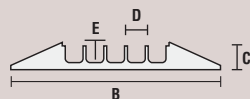
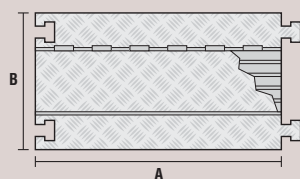
GENERAL PURPOSE 5 CHANNEL SYSTEM

Protect valuable electrical cables, cords and hose lines from damage and abuse while ensuring a method of safe passage for vehicles and pedestrian traffic. Ideal for public, commercial and industrial applications where general purpose cable protection is required.

LINEBACKER® GP-5 5 CHANNEL PROTECTOR WITH "T" CONNECTORS

MODEL	DESCRIPTION	A LENGTH	B WIDTH	C HEIGHT	D-CHAN. WIDTH	E-CHAN. HEIGHT	WEIGHT
CP5X125-GP	5-Channel Protector	36 in. (914.4 mm)	17.5 in. (444.5 mm)	1.95 in. (50 mm)	1.3 in. (33 mm)	1.3 in. (33 mm)	22 lbs. (10.0 kg)
CPEC5X125-GP (Pair only)	5-Channel End Caps (female)	4.75 in. (120.7 mm)	17.5 in. (444.5 mm)	1.95 in. (50 mm)	1.3 in. (33 mm)	1.3 in. (33 mm)	2.7 lbs. (1.2 kg)
	(male)	4.75 in. (120.7 mm)	17.5 in. (444.5 mm)	1.95 in. (50 mm)	1.3 in. (33 mm)	1.3 in. (33 mm)	2.7 lbs. (1.2 kg)

Protector Color: O/Y = Orange Lid with Yellow Ramps • O/B = Orange Lid with Black Ramps
B/B = Black Lid with Black Ramps • End Cap Color: Orange



Linebacker® GP 5 Channel - protects cable and hose lines up to 1.3 in. outside diameter

NEC REQUIREMENTS: Protects valuable electrical cables and permits compliance with 1996 National Electrical Code requirements (Article 525) for insulating electrical cables and cords at carnivals, fairs, amusement parks and similar events.

SPECIFICATION DATA		LOAD CAPACITY PER TIRE/AXLE		Safety Warning Symbols Molded into Lid	See Page 15 for ADA Compliant Ramps
Material.....	Polyurethane (UV stabilized)	Channels	Max Load 70°F (21°C)		
Operating Temp.....	-40°F to 120°F (-40°C to 48°C)	5	10,500 lbs./Tire (4,783 kg)		
Hinge Pin Material.....	Reinforced fiberglass		21,000 lbs./Axle (9,526 kg)		
Safety Symbols.....	Per ANSI. Z535.3-1991				



LINEBACKER® CABLE PROTECTORS

GP

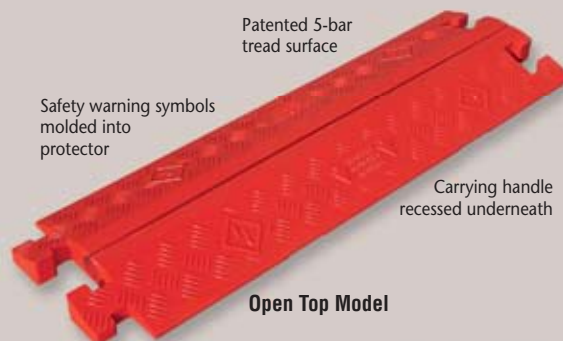
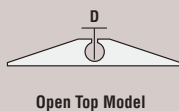
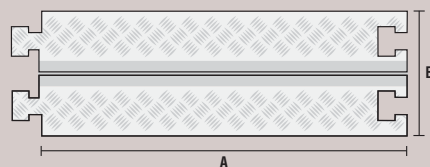
GENERAL PURPOSE 1 CHANNEL SYSTEM

Single Channel Systems protect valuable electrical cables, cords and hose lines from vehicle and foot traffic. Ideal for temporary re-routing of single cable and hose lines including fragile fiber optic telecommunications cable.

LINEBACKER® GP-1 1 CHANNEL PROTECTOR WITH "T" CONNECTORS

MODEL	DESCRIPTION	A LENGTH	B WIDTH	C HEIGHT	D-CHAN. WIDTH	WEIGHT
CP1X125-GP	1-Channel Protector - Open Top	36 in. (914.4 mm)	11.5 in. (292.1 mm)	1.6 in. (40.6 mm)	1.25 in. (31.8 mm)	13 lbs. (5.9 kg)
CP1X125-GP-DO	1-Channel Protector - Drop Over	36 in. (914.4 mm)	11.5 in. (292.1 mm)	1.6 in. (40.6 mm)	1.25 in. (31.8 mm)	13 lbs. (5.9 kg)

Protector Color: O = Orange • B = Black



Heavy duty "T" connector



Linebacker® GP 1 Channel - protects cable and hose lines up to 1.25 in. outside diameter

SPECIFICATION DATA		LOAD CAPACITY PER TIRE/AXLE		Safety Warning Symbols Molded into Protector	See Page 15 for ADA Compliant Ramps
Material.....	Polyurethane (UV stabilized)	Channels	Max Load 70°F (21°C)		
Operating Temp.....	-40°F to 120°F (-40°C to 48°C)	1	11,700 lbs./Tire (5,307 kg)		
Safety Symbols.....	Per ANSI. Z535.3-1991		23,400 lbs./Axle (10,614 kg)		

NOTE: Drop over protectors do not prevent abrasion to cable from below.