

Available from:

CablesPlus

U ★ S ★ A

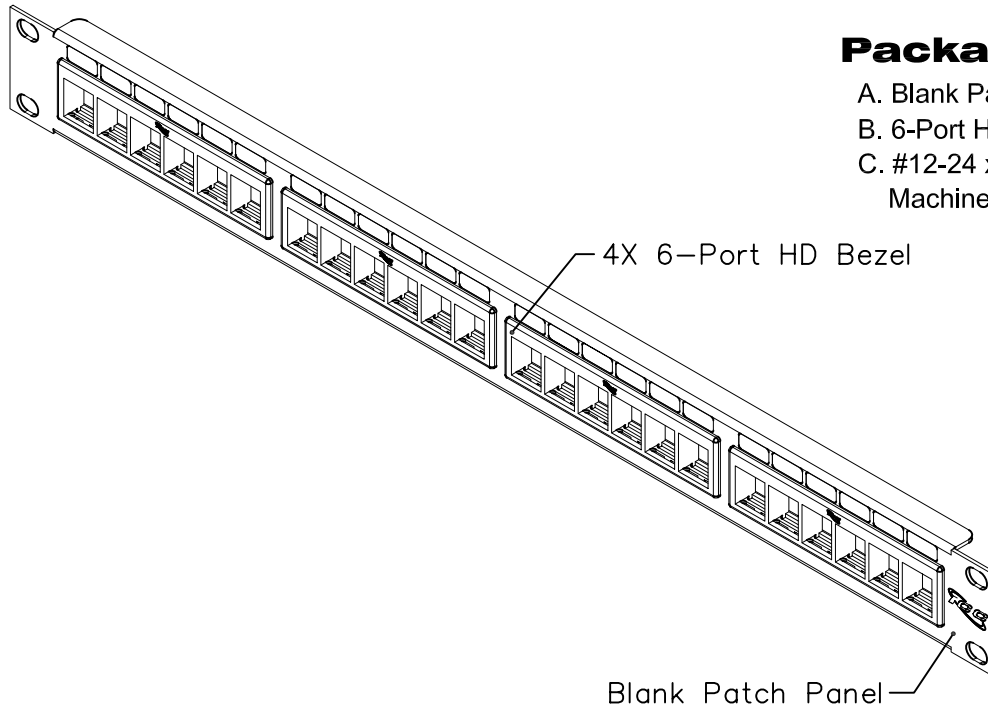
Cables Plus, LLC

8504 Glazebrook Ave Richmond, VA 23228 ~ Toll Free (866) 678-5852

www.CablesPlusUSA.com

24-Port High Density Flush Blank Patch Panel

PRODUCT SPECIFICATION



Package includes:

- A. Blank Patch Panel, 1 pc
- B. 6-Port High Density Bezel, 4 pcs
- C. #12-24 x 5/8" Pan Head, Pilot Point Machine Screw, 4 pcs

Features and Benefits:

- Rack mounted reinforced steel panel with pre-numbered ports
- Flush mount design adds stability by allowing a rigid fit and a neat finished appearance without the aid of color ID caps
- Designed to support the distribution of voice, data, audio, video, and fiber optic needs for commercial or residential applications
- Ideal for use in high density applications with more connectivity in less space
- Designed to fit all standard 19" racks and cabinets
- 1 rack mount space (RMS)
- Accommodates a wide variety of easy to snap-in modules, providing configuration flexibility
- Accepts all IC107 HD modules
- UL listed

PATCH PANEL, BLANK, HD, 24-PORT, 1 RMS

ITEM NO.	IC107BP241
DWG NO.	PS107BP241

REV.	A
PAGE NO.	1



Available from:

CablesPlus

U ★ S ★ A

Cables Plus, LLC

8504 Glazebrook Ave Richmond, VA 23228 ~ Toll Free (866) 678-5852

www.CablesPlusUSA.com

Available from:

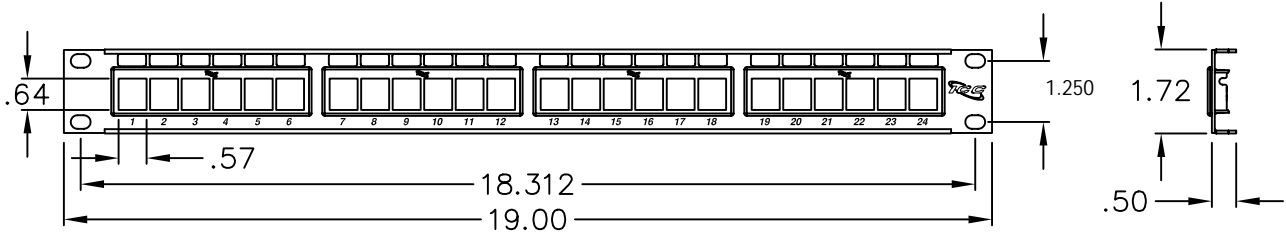
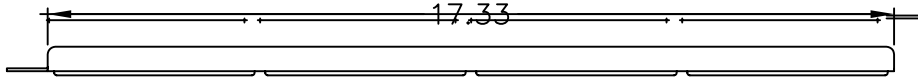
CablesPlus

U ★ S ★ A

Cables Plus, LLC

8504 Glazebrook Ave Richmond, VA 23228 ~ Toll Free (866) 678-5852

www.CablesPlusUSA.com



NOTE: UNLESS OTHERWISE SPECIFIED

- 1. BLANK PATCH PANEL:
 - A. MATERIAL: 16 GA CRS
 - B. SURFACE FINISH: BLACK POWDER COAT
- 2. 6-PORT HD BEZEL:
 - A. MATERIAL: ABS, UL 94V-0

PATCH PANEL, BLANK, HD, 24-PORT, 1 RMS

ITEM NO. IC107BP241
DWG NO. PS107BP241

REV. A
PAGE NO. 2



Available from:

CablesPlus

U ★ S ★ A

Cables Plus, LLC

8504 Glazebrook Ave Richmond, VA 23228 ~ Toll Free (866) 678-5852

www.CablesPlusUSA.com