

Available at

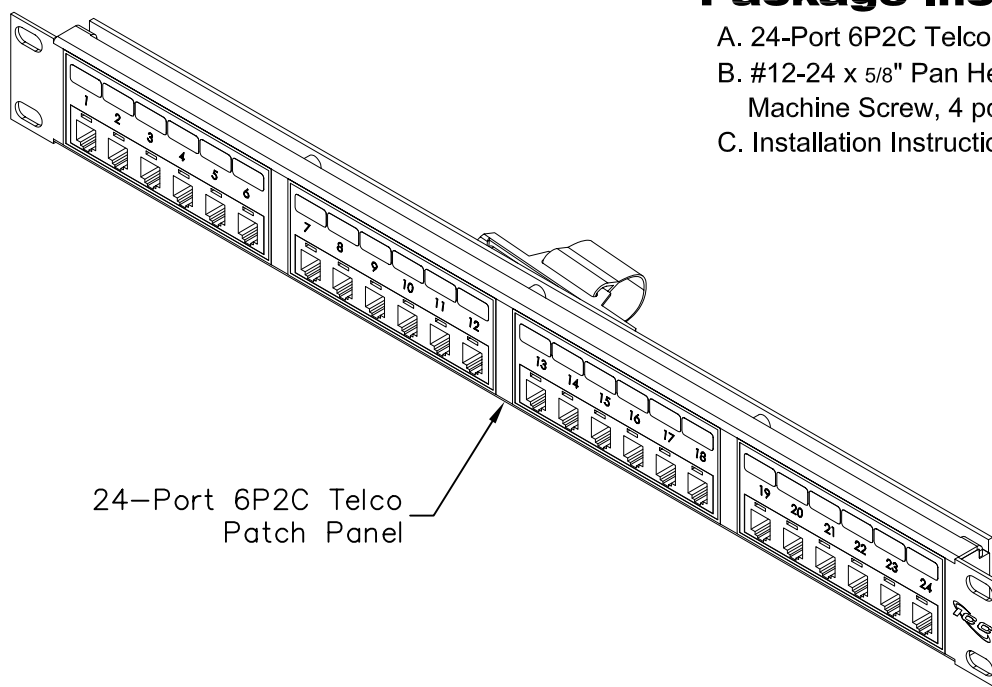
CablesPlus
U ★ S ★ A

<http://www.cablesplususa.com/>

☎ 866-678-5852

24-Port 6P2C Telco Patch Panel

PRODUCT SPECIFICATION



24-Port 6P2C Telco
Patch Panel

Package includes:

- A. 24-Port 6P2C Telco Patch Panel, 1 pc
- B. #12-24 x 5/8" Pan Head, Pilot Point Machine Screw, 4 pcs
- C. Installation Instructions, 1 sheet

Features and Benefits:

- Rack mounted 6-position 2-conductor Telco patch panel provides voice connectivity applications
- Integrated with 1 male 50-pin telco connector
- Designed to fit all standard 19" racks and cabinets
- 1 rack mount space (RMS)
- Used with ICLC2, ICLC4, and ICLC6 line cords
- Installation instructions #MSR-0259 included
- UL listed

PATCH PANEL, TELCO, 6P2C, 24-PORT, 1 RMS

ITEM NO. ICMPPO24T2

REV. A

DWG NO. PSMPP024T2

PAGE NO. 1

ICG
Premium Products
Proven Performance
Competitive Prices

CablesPlus
U ★ S ★ A

<http://www.cablesplususa.com/>

☎ 866-678-5852

Available from:

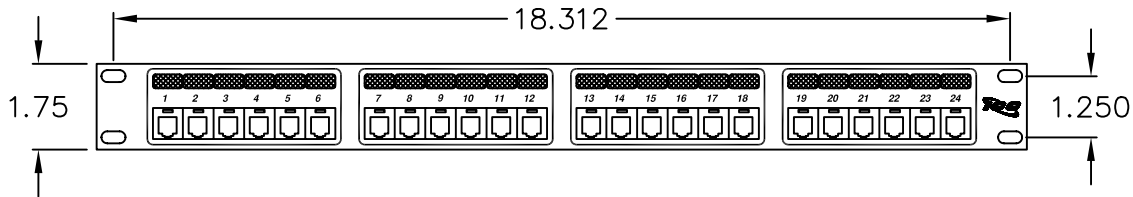
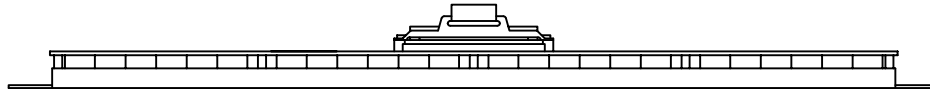
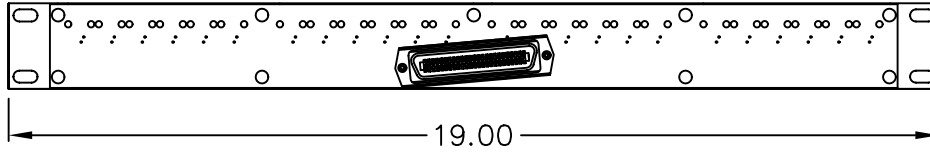
CablesPlus

U * S * A

Cables Plus, LLC

8504 Glazebrook Ave Richmond, VA 23228 - Toll Free (866) 678-5852

www.CablesPlusUSA.com




WIRING CHART

TELCO 50-PIN	USOC RJ-11, 2-WIRE
26	4
1	3
27	4
2	3
28	4
3	3
29	4
4	3
30	4
5	3
31	4
6	3
32	4
7	3
33	4
8	3
34	4
9	3
35	4
10	3
36	4
11	3
37	4
12	3
38	4
13	3
39	4
14	3
40	4
15	3
41	4
16	3
42	4
17	3
43	4
18	3
44	4
19	3
45	4
20	3
46	4
21	3
47	4
22	3
48	4
23	3
49	4
24	3
50	OPEN
25	OPEN
NO. OF PORTS	24

NOTE: UNLESS OTHERWISE SPECIFIED

1. MATERIAL:
 - A. 24-PORT PATCH PANEL: 16 GA CRS
 - B. JACK HOUSING: ABS, UL 94V-0
 - C. SPRING WIRE: SQUARE SPRING WIRE, TEMPERED PHOSPHOR BRONZE
 - D. GOLD RATING: 50 MICRO INCHES OF GOLD OVER 100 MICRO INCHES OF NICKEL
2. SURFACE FINISH: BLACK POWDER COAT

PATCH PANEL, TELCO, 6P2C, 24-PORT, 1 RMS		 PremiumProducts ProvenPerformance CompetitivePrices	
ITEM NO.	ICMPP024T2		REV. A
DWG NO.	PSMPP024T2		PAGE NO. 2